

# 9/125 (OS1/OS2) Optical Fiber Patchcords

V.3.3

## Description

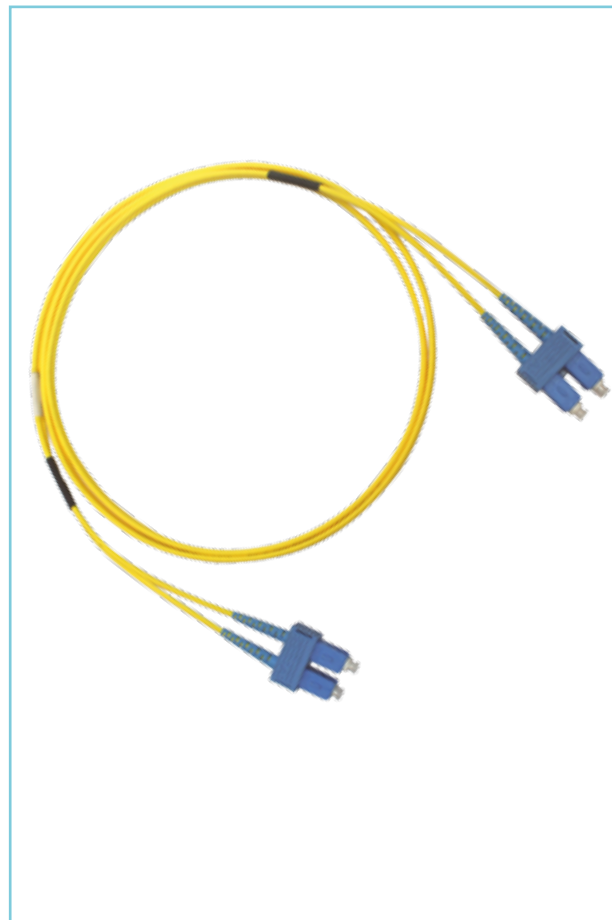
FiberFab singlemode patchcords are used for telecom networks and also used for high speed metropolitan and access network. The singlemode patchcords are manufactured using LSZH cables which conform to IEC, EIA TIA and Telecordia standards. The OS1/OS2 patchcords are terminated with standard FiberFab connector which gives optimum optical performance.

## Features / Benefits

- ▶ SC, LC, ST, FC MU and E2000 connectors
- ▶ Low smoke zero halogen (LSZH) jacket in yellow colour
- ▶ 900µm tight buffer
- ▶ OS1/OS2 Fiber conforms to ITU-652.D, TIA/EIA 492 CAAA
- ▶ Simplex and duplex assemblies
- ▶ Duplex assemblies available with clips (SC and LC)
- ▶ Different connector performance range for specific application
- ▶ Armoured option also available

## Applications

- ▶ CATV / VIDEO
- ▶ Passive Optical Network PON
- ▶ WDM / DWDM
- ▶ FTTH
- ▶ Data centres
- ▶ Supports high speed multi channel video, data and voice services in metropolitan and access networks
- ▶ ATM, SONET and WDM



## Connector Specification

OPTICAL PERFORMANCE	SINGLEMODE	CONFORMANCE
IL Max/Master (Acceptance)	0.30 dB	IEC 61300-3-4
Ave/Master*	0.18 dB	IEC 61300-3-4
Ave/Random*	0.18 dB	IEC 61300-3-34
Return Loss	50/60 dB	IEC 61300-3-6

## Cable Specification

CHARACTERISTICS	SIMPLEX	DUPLEX
Cable Material	LSZH or PVC	LSZH or PVC
Strength Member	Aramid	Aramid
Crush (N)	1000	1000
Operating Temperature (°C)	-20 to 60	-20 to 60
Fire Specification	IEC 60332-1 / IEC 60332-3	

## Fiber Specification

CHARACTERISTICS	
Attenuation (dB) / km	0.38 @ 1310nm / 0.25 @ 1550nm
Chromatic Dispersion (ps/nm x km)	3.0 @ 1310nm / 18.0 @ 1550nm
Max Ethernet Transmittable Distance	Please refer to Fiber Comparison Chart

## Part Number Generator

